

## THS353

THS353-A-B-C-D

A= 318 Adapter size

B= 20 size of opening

C= 20 Pin diameter

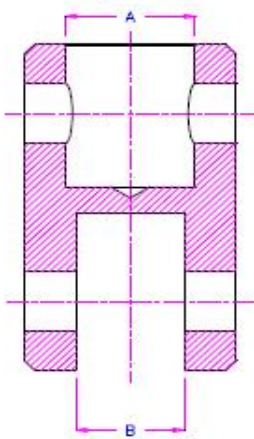
D= Style **round rectangular square**

E= fre distance above Pin

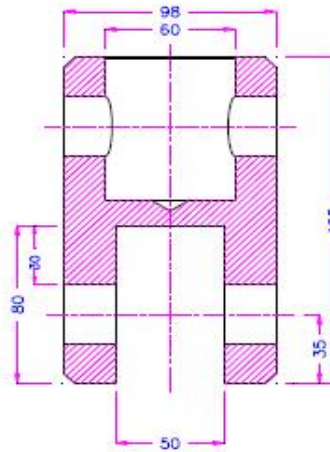
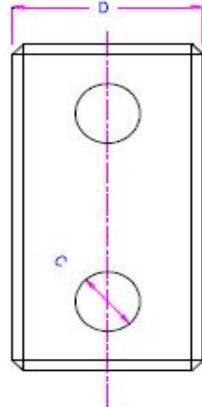
F= force



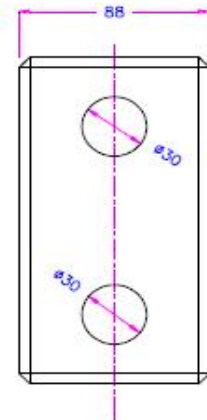
D= C rectangle Rechteck  
 D= Q quadrat  
 D= R Round



THS353-A-B-C-D



THS353-60-50-30-Q



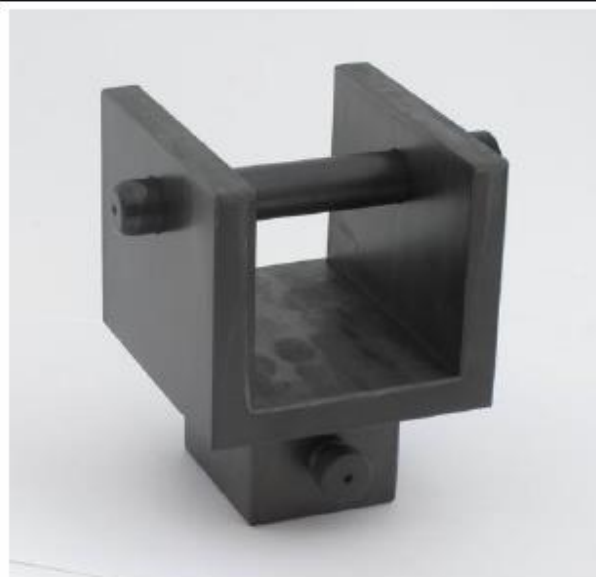
THS353-159-20-8-c



THS353-318-20-20-r



THS353-318-80-20-q-S1



THS353-S1-ASTM-E399

Clevis adapter hardened





THS353-318-40-24-r



THS353-318-12-6-r



THS353-159-10-12.8-q



THS353-318-10-ISO6259



THS353-.159-70-10-c